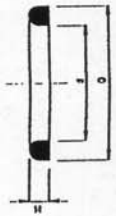


SEALS FOR CANNING, BOTTLING AND PROCESSING INDUSTRY

CODE	RJT RINGS - INCH
7296	RJT 1"
7297	RJT 1.1/2"
7298	RJT 2"
7299	RJT 2.1/2"
7300	RJT 3"
7301	RJT 4"



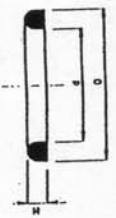
CODE	D RINGS - INCH
7565	DR 1"
7566	DR 1.1/2"
7567	DR 2"
7568	DR 2.1/2"
7569	DR 3"
7570	DR 4"



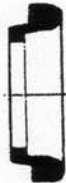
CODE	RJT RINGS - METRIC
8289	RJT 10mm
8288	RJT 15mm
8287	RJT 25mm
8390	RJT 50mm



CODE	D RINGS - METRIC
8203	MDR 15
8319	MDR 20
8202	MDR 25
8320	MDR 32
8339	MDR 40
8321	MDR 50
8696	MDR 60
8697	MDR 65
8322	MDR 80
8340	MDR 90
8698	MDR 100
8699	MDR 125
8700	MDR 150



CODE	C.I.P. STEP RING - INCH
<i>(clean in place)</i>	
7559	CIP 1"
7560	CIP 1.1/2"
7561	CIP 2"
7562	CIP 2.1/2"
7563	CIP 3"
7564	CIP 4"



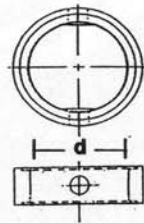
CODE	TRI CLAMP - METRIC
8861	MTC 32
8702	MTC 50
8703	MTC 65
8704	MTC 80
8705	MTC 100
9387	MTC 150

CODE	TRI CLAMP - INCH
9934	TCDN 1/2"
8335	TCDN 1"
8284	TCDN 1.1/2"
8285	TCDN 2"
8337	TCDN 3"
8338	TCDN 4"



Metric sizes available on indent

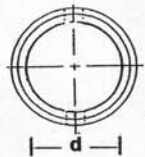
CODE	BUTTERFLY VALVE SEALS
8323	BVS20 DN20 (d22)
8280	BVS25 DN25 (d27)
8325	BVS32 DN32 (d34.5)
8860	BVS40 DN40 (d35)
N/S	BVS40A DN40A(d38.5)
8281	BVS50 DN50 (d48.5)
8282	BVS60 DN60 (d60)
8283	BVS26 DN65 (d72)
8324	BVS80 DN80 (d80)
8326	BVS100 DN100(d95)



CODE	DEFLECTOR SEAL
8286	DS11 11x5.5x4
9744	DS13 13x6/7x4.5



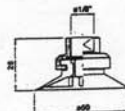
CODE	BUTTERFLY VALVE SEALS
<i>(without flats)</i>	
N/S	DN25 (d24)
N/S	DN40 (d38)
N/S	DN50 (d50)
N/S	DN65 (d64)
8324	B VS/F80 DN80 (d74.5)
N/S	DN100(d99.5)



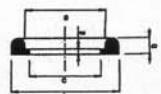
*Metric seals may also fit inch size valves.
N/S - available on indent.*

8334 SUCTION CUP
Female 1/8" BSP
53mm dia.

SC53



CODE	D RING WITH FLANGE
10009	MDR65-F DN65



ALL SEALS ARE ALSO AVAILABLE IN PTFE AND ARE MANUFACTURED TO ORDER.
(PTFE is also known as Teflon, Dupont or Hostafion Hoechst.)